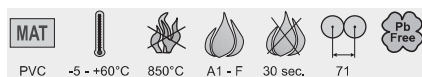
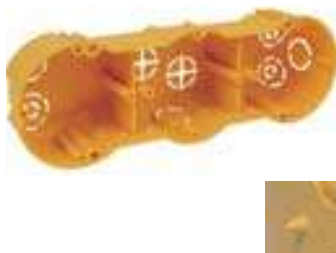
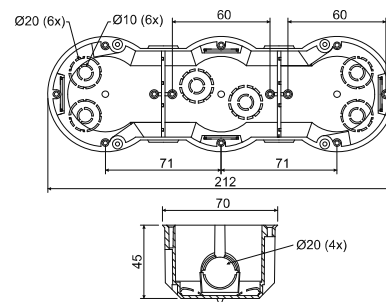


KP 64/3L

- instrument box



- ✓ For modern installations in combined frames.
- ✓ Significant rigidity makes device installation easier.
- ✓ Three tips on the external side indicate the drilling points.
- ✓ Mounting screws are fitted with a triple thread for quick installation.
- ✓ Sold in the smallest complete packages (2 pcs).
- ✓ When mounting, it is not necessary to countersink the plasterboard edge.



| item | conf. | description | | EAN |
|----------|-------|---|-------|---------------|
| | | | pcs | |
| KP 64/3L | NA | two boxes packed in shrink foil and covered with label, screws included in the bag, packs aligned in cardboard | 2; 36 | 8595057611696 |
| | ST | individual boxes fitted with screws for mounting into double wall and covered with label, device screws are fitted in boxes | 32 | 8595057699410 |



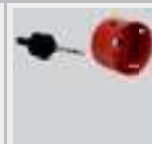
- accessories



TYP0...
pg. 1-76



- tools for installation



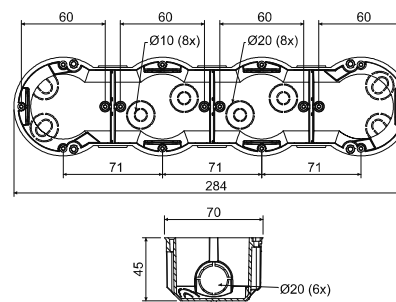
VPTU; VPT 64
Ø 68 mm
pg. 1-77

KP 64/4L

- instrument box



- ✓ For modern installations in combined frames.
- ✓ Significant rigidity makes device installation easier.
- ✓ Four tips on the external side indicate the drilling points.
- ✓ Mounting screws are fitted with a triple thread for quick installation.
- ✓ Sold in the smallest complete packages (2 pcs).
- ✓ When mounting, it is not necessary to countersink the plasterboard edge.



| item | conf. | description | | EAN |
|----------|-------|---|-------|---------------|
| | | | pcs | |
| KP 64/4L | NA | two boxes packed in shrink foil and covered with label, screws included in the bag, packs aligned in cardboard | 2; 28 | 8595057632776 |
| | ST | individual boxes fitted with screws for mounting into double wall and covered with label, device screws are fitted in boxes | 28 | 8595568903624 |



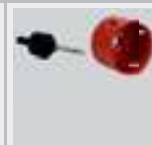
- accessories



TYP0...
pg. 1-76



- tools for installation



VPTU; VPT 64
Ø 68 mm
pg. 1-77

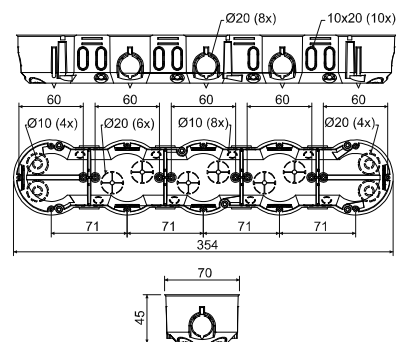
KP 64/5L

- instrument box



| | | | | | | |
|------------|------------|-------|--------|---------|----|---------|
| MAT | | | | | | |
| PVC | -5 - +60°C | 850°C | A1 - F | 30 sec. | 71 | Pb Free |

- ✓ For modern installations in combined frames.
- ✓ Significant rigidity makes device installation easier.
- ✓ Five tips on the external side indicate the drilling points.
- ✓ Mounting screws are fitted with a triple thread for quick installation.
- ✓ Sold in the smallest complete packages (2 pcs).
- ✓ When mounting, it is not necessary to countersink the plasterboard edge.



| item | conf. | description | | EAN |
|-----------------|-----------|---|-------|---------------|
| | | | pcs | |
| KP 64/5L | NA | two boxes packed in shrink foil and covered with label, screws included in the bag, packs aligned in cardboard | 2; 16 | 8595057657229 |
| | ST | individual boxes fitted with screws for mounting into double wall and covered with label, device screws are fitted in boxes | 16 | 8595568903631 |

**- accessories**

TYP0...
pg. 1-76

**- tools for installation**

VPTU; VPT 64
Ø 68 mm
pg. 1-77

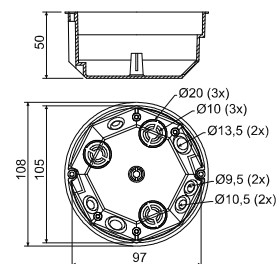
KO 97/L

- junction box with cover KO 97 V/1



| | | | | | |
|------------|------------|-------|--------|---------|---------|
| MAT | | | | | |
| PVC | -5 - +60°C | 850°C | A1 - F | 30 sec. | Pb Free |

- ✓ A large number of knockouts to make larger installations.
- ✓ Mounting screws are fitted with a triple thread for quick installation.



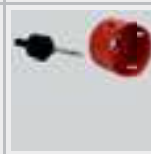
| item | conf. | description | | EAN |
|----------------|-----------|---|-----|---------------|
| | | | pcs | |
| KO 97/L | NA | boxes fitted with screws for installation in double wall and with lids separately placed into cardboard | 80 | 8595057600171 |

**- accessories**

S-96
pg. 1-74

SP-96
pg. 1-74

TYP0...
pg. 1-76

**- tools for installation**

VPTU; VPT 97
Ø 103,5 mm
pg. 1-77